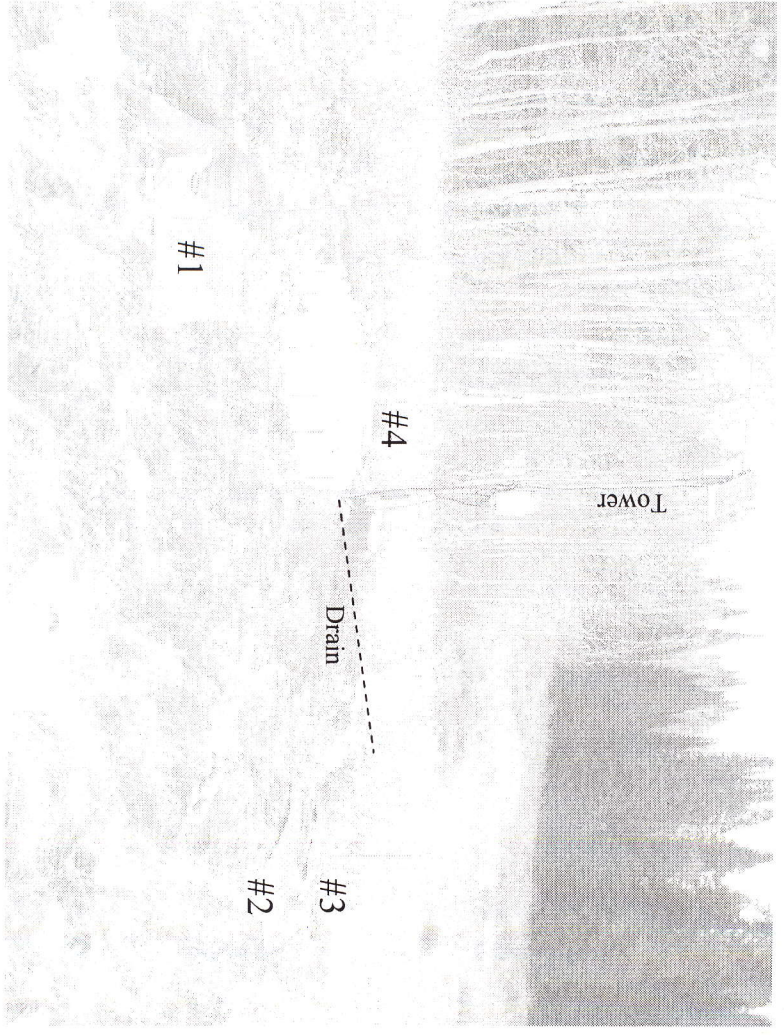
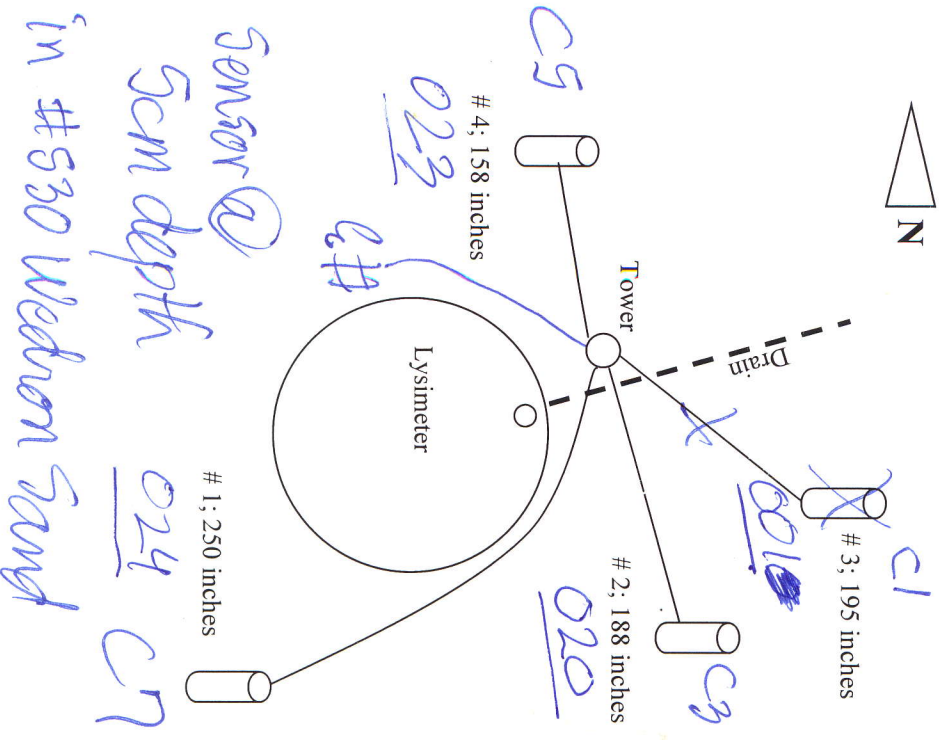


Installation 12/14/2009 Done in w/ Trucks
 See Pic's From Maxson

Big lysimeter schematic 10/28/09

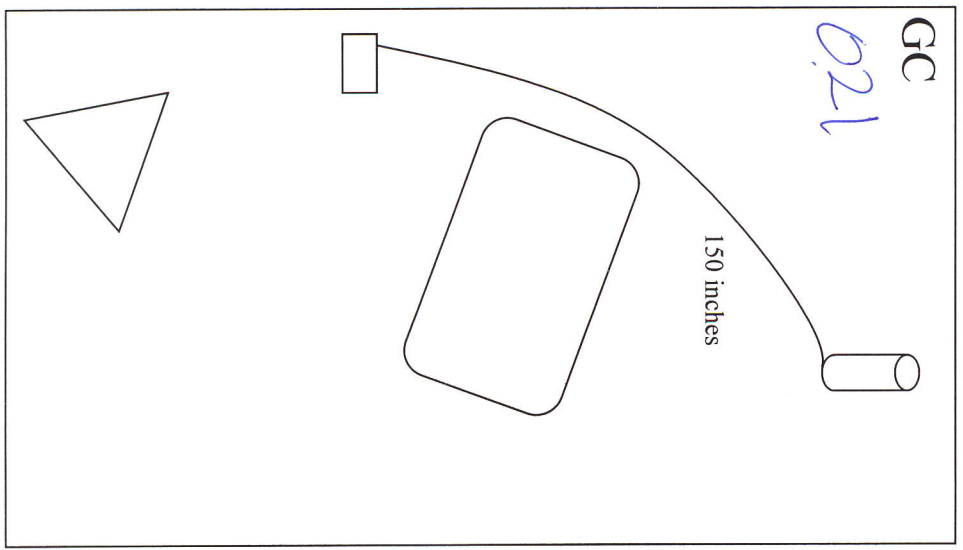
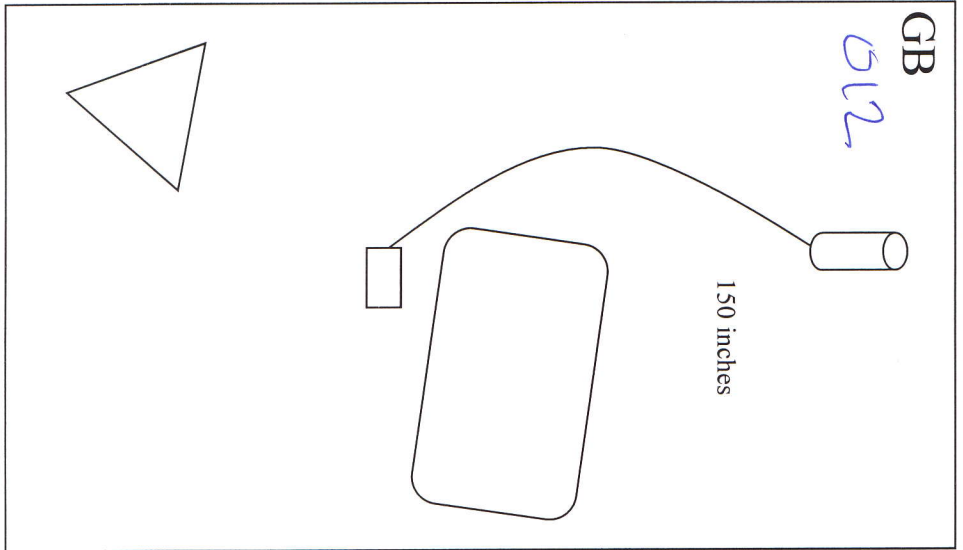
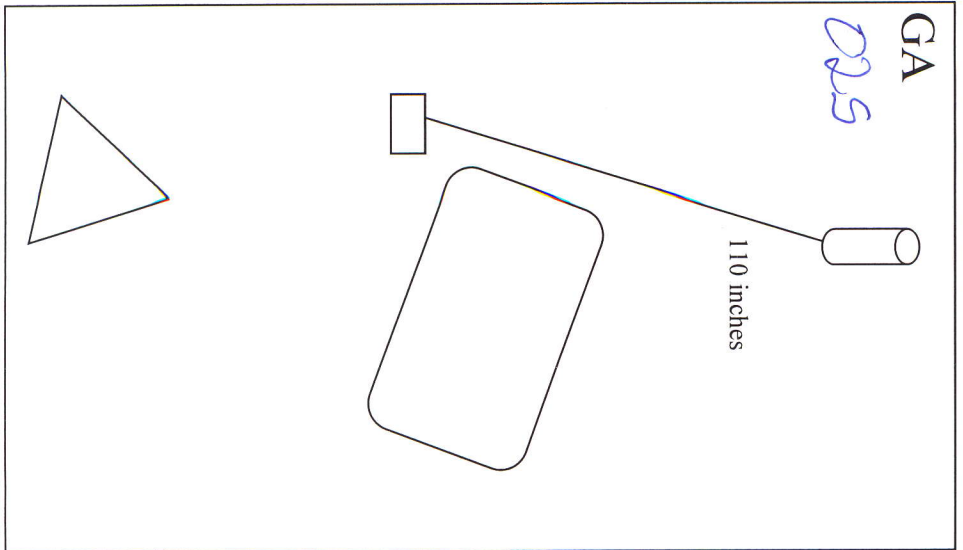
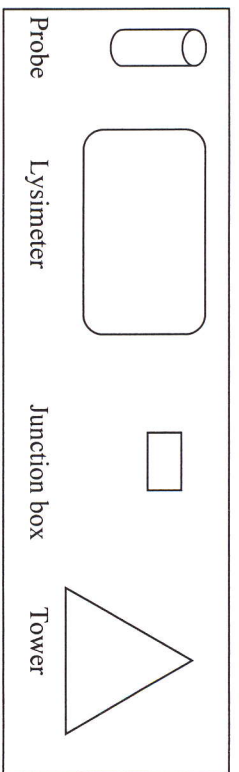


End of Sensor marked by Orange Fiberglass Bole

Sensor @ 10cm depth in 2mm sieved soil

Small lysimeter schematics

10/28/09 (not to scale)



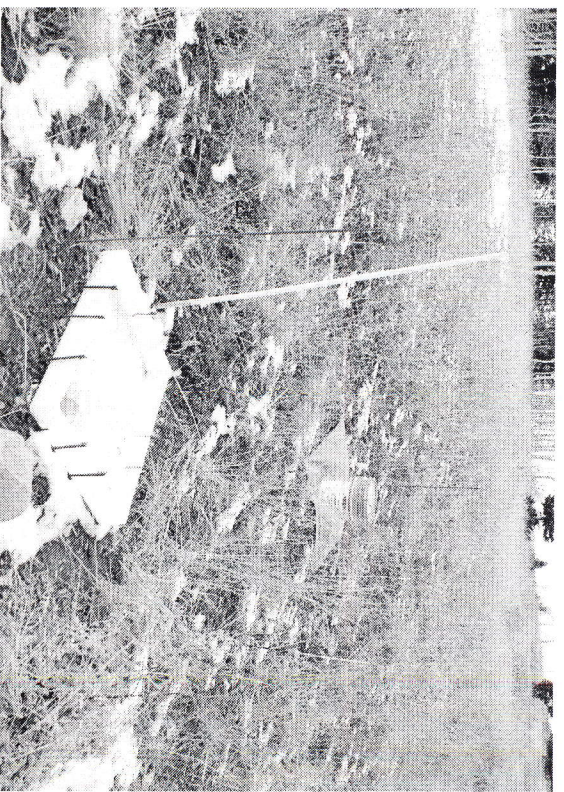
Small lysimeter pictures 10/28/09



GA

Orange pole next to lysimeter marks junction box.

Orange pole next to bucket and tarp marks approximate location of soil heat flux probe.



GB



GC